

Müzik: AYDIN TEKİNDÖZ

Duyck

Söz : TURHAN TAŞAN

$g = 192$

GİTİME KAL NC OLURSUŒ

Aranāgne

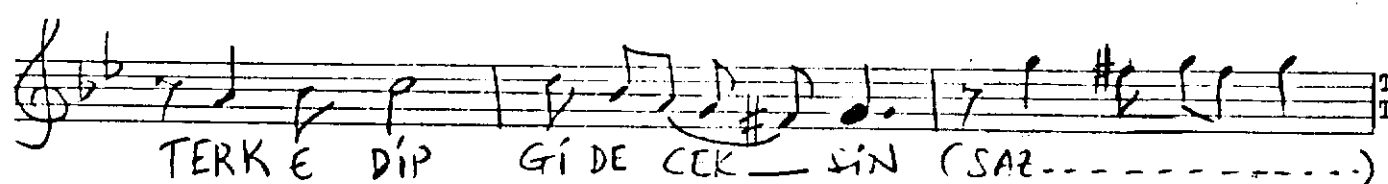
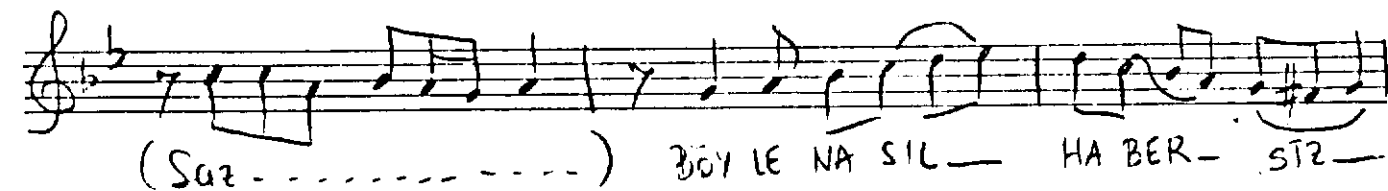
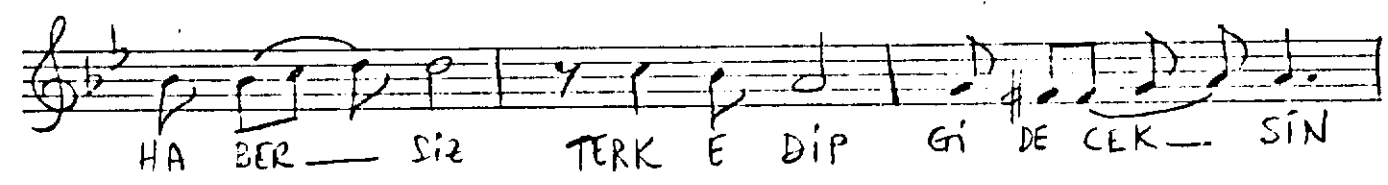
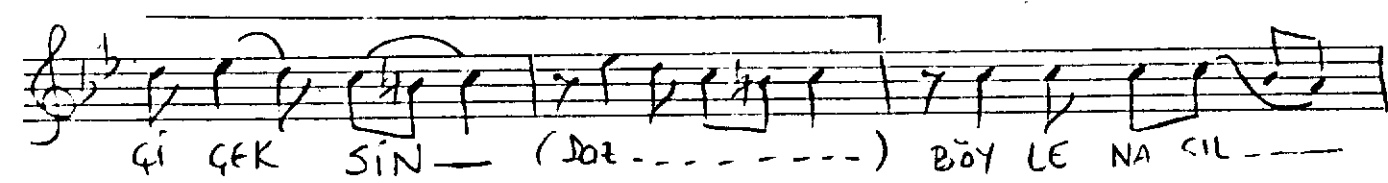
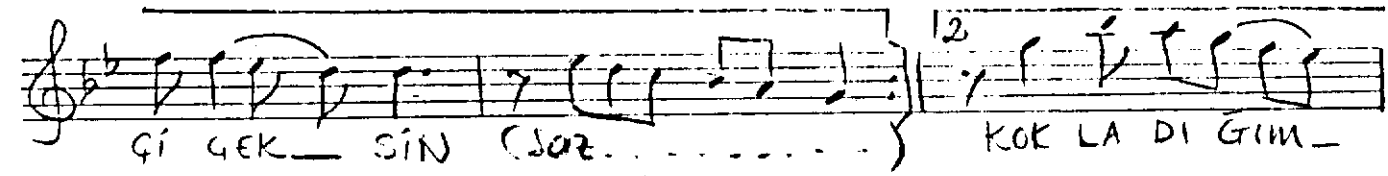
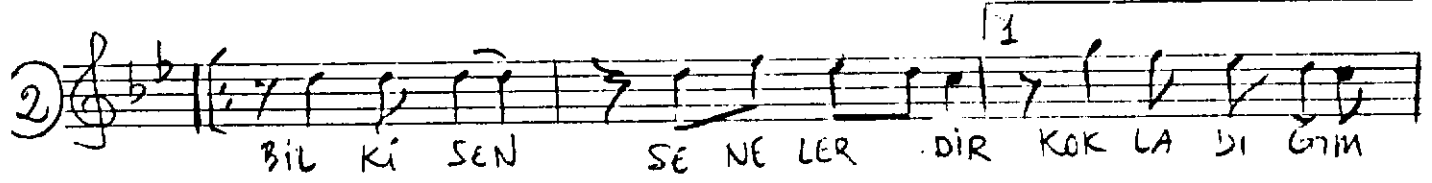
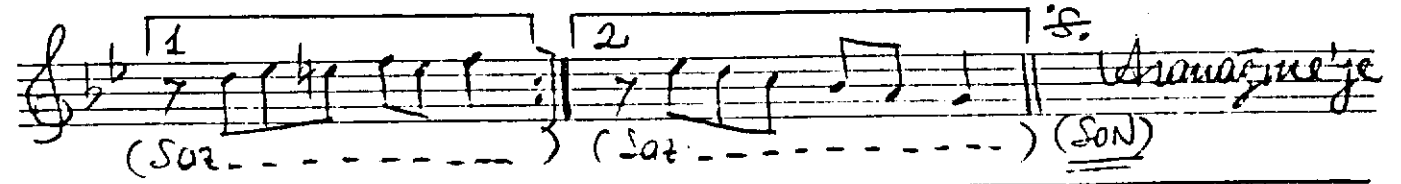
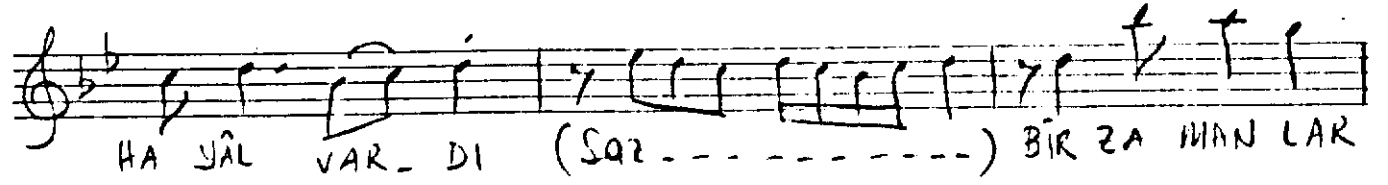
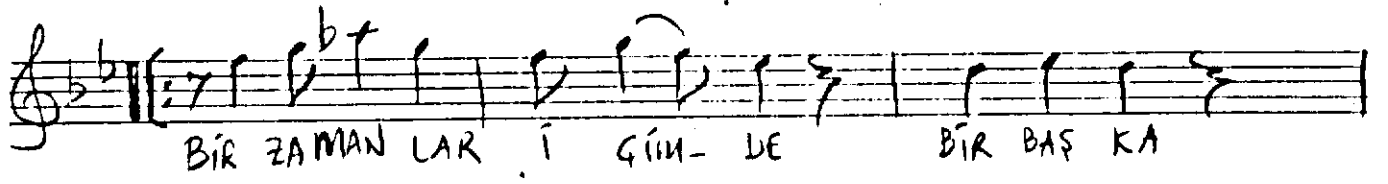
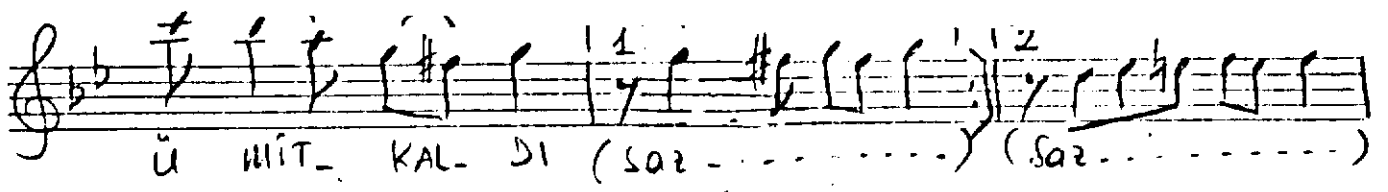
NE O LUR SUN KİM TU TA ÇAK E LİM— DEN

Handwritten musical notation for the first line of the song. It features a treble clef, a key signature of one flat (B-flat), and a 7/8 time signature. The melody is written on a single staff. The lyrics "Saz - - - - -" are written below the first measure, and "KİM TU TA ÇAK E LİM DEN -" are written below the subsequent measures. A double bar line with a "2" above it indicates a second ending or a repeat.

ET TI G'NI ZE YE MIN-DEN (Satz -----)

ET TI Gİ MİT YE MİN — DEN (Sa- - - - -)

NE FAL CI NIN FA LIN- DA NE BEN DE



Türk:  
Tosca: